

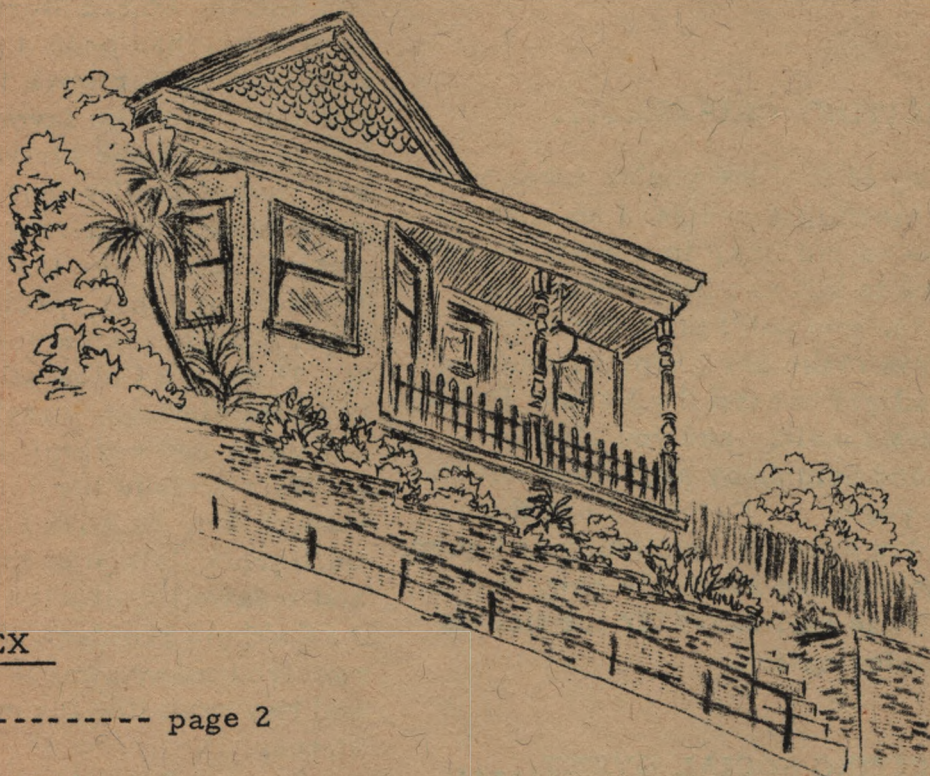
# Point Counterpoint

A JOURNAL FOR CIVIC COMMUNICATION

VOL. II, No. 25

WEEKLY. 10¢.

For the week beginning Sept. 22, 1967



## INDEX

ART ----- page 2

BOOK REVIEW ---- page 7

CIVIC NEWS -----page 10, 11

Letter from  
Parks Director -page 3

### LOCAL

Events----- page 2, 3, 9

People----- Page 6, 10

NOTES On Dogs --- page 6

POETRY----- page 9

### LETTERS TO

The Editor. ----- page 11, 15

### OVER THE

Backyard Fence --page 5

### REMINISCING

Point History ---- page 4, 5

SCHOOL NOTES ---- page 7, 8, 2

WANT ADS ----- page 12, 13, 14



## 2. *How Much* **EXCITEMENT** *can you take?...* EXCITING PARKS.....

Exciting news comes from the East Bay Regional Parks..... Sunday, October 22 marks the opening of two new parks: Kennedy Grove and Briones Park. Most of the celebration will be held at Kennedy Grove because of the large grassy level area. There will be a Boy Scout encampment, music from the Richmond Symphony Orchestra, the Salesian High School Band and the Lee Skipper Jazz Quintet.

Briones park will be open for picnicking.

### EXCITING CRUISE.....

How long is it since you've taken your wife for a moonlight cruise (no, not in your car -- on the Bay, in a boat). Here's your chance to kill two birds with one stone ... no, you don't push her overboard... you make her happy by dancing in the moonlight aboard the Harbor Princess, to live music; and you also help the Richmond Symphony provide concerts during the year. October 13 is the date, Friday evening, beginning at 9 p.m. sharp. Tickets are available now, for \$3.50. Please call 235-4222 for tickets and more information.

### EXCITING SOCIAL EVENT.....

Sometime in mid-October the Point Richmond Civic Group will hold the most exciting meeting it has ever planned. The evening social will include a showing of Point Richmond artists, possibly musical entertainment, and of course, refreshments. The event is scheduled to take place in the Old Firehouse, and all the Point will be invited. Artists interested in participating should call one of the evening's co-hostesses: Avis Blanchette (233-3149) or Kaye Miller (232-0482).

## ART

### SUNDAY RECEPTION AT THE ART CENTER

Two famous artists will exhibit their work at the same time at the Richmond Art Center. The exhibition will open with a reception Sunday afternoon, September 24, from 2:00 to 4:00, and will continue through October 22.

Helen Salz, who has had one-man shows at the DeYoung Museum, the Santa Barbara Museum, the Carmel Art Gallery, the Palace of the Legion of Honor, the San Francisco Museum of Art and the Marie Sterner Gallery in New York, has been a painter all her life. Much of her work is in water color and ink, but she favors pastels. In her portraits she strives for "the inner and unique quality that distinguishes each person from everyone else in the world"... and her landscapes are "that special day, that special place..." Mrs. Salz is also a poet of note.

Theodore Polos will have on exhibit oil paintings, acrylic paintings, drawings and ceramics. His one-man exhibits include the San Francisco Museum of Art, M.H. deYoung Museum, California Palace of the Legion of Honor and Maxwell Galleries of San Francisco. An Oakland resident, Mr. Polos has received many awards in his exhibits, and has exhibited throughout the United States.

The exhibits should be a delight-- and they're not Funk art!

~~~~~

### A SUNDAY INSTALLATION

An Installation Ceremony honoring the Rev. Mr. Sam Hendrix, new minister of the Point Richmond Baptist Church will be held Sunday Evening at 7:00, September 24. Among those on the program will be Rev. Farmer of the First Methodist Church and Rev. Ira Akin, former Pastor of the Baptist Church. All are welcome to attend.



# Reminiscing

with Don Church

PART VI of excerpts from the History of Richmond, written in 1926 by Clarence Odell.

## FROM 1850 to 1900

In the 50's, the place at the foot of Tenth Street was known as Ellis Landing. Before that time, this district was for ages the burial ground for prehistoric man. Scientists from all over the world have studied Ellis Shell Mound. In 1849 Capt. George Ellis operated schooners between San Francisco and Ellis Landing. The channel ran from San Francisco past Ellis Landing to San Pablo Bay through the present site of the Standard Oil Co. The Potrero hills formed an island subject to government occupancy. When this channel was closed, it made this section part of the mainland. In 1859 Capt. Ellis acquired the property. He operated two schooners, the Sierra and Mystery, carrying produce and freight between the landing and San Francisco. John Nystrom was manager of the landing.... after Mr. Ellis' death, his home and 90 acres of harbor property were purchased by the Ellis Landing and Dry Dock Co., M. Emanuel, president.

Early large landowners included George Barrett, John Macdonald, Owen Griffins, John Nystrom, Benjamin Boorman and Bernard Shapiro.

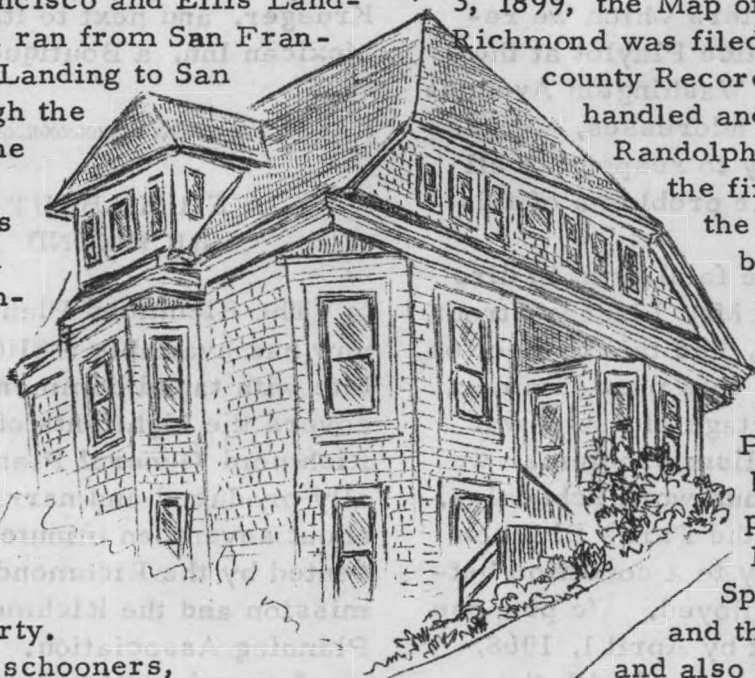
Under the guise of its being "The People's Road" the San Francisco and San Joaquin Valley Railroad was built from Bakersfield to Stockton and then on to Point Richmond. The portion from Stockton to Point Richmond (now known as Ferry Point) was built during 1899

and the early part of 1900. When the writer came here in November 1899, the rails had been laid this side of Pinole, although the grading was nearly finished and the tunnel was through the Potrero Hills, but the fill across the tidelands from near Kellers Beach to the Point had not been completed. However a few people had awakened to the fact that there would be a city here or at least a chance to sell lots, for on June 3, 1899, the Map of the town of Point Richmond was filed in the office of the county Recorder. This tract was handled and sold by Charles T. Randolph of Oakland and was the first within what is now the City of Richmond to be subdivided. It comprised the land on the north side of Barrett Avenue (designated on that map as Point Richmond Ave.) between Mrs. McGann property at the east line of A Street (called Spreckles on that map) and the Santa Fe Railroad, and also included a triangular piece west of the railroad, cut

into some 5 or 6 blocks. As the place where Point Richmond Ave. crosses the railroad was destined to become a very busy portion of the yards of the railroad, the company exchanged some of their ground east of the railroad south of Point Richmond Ave. for that portion of the Town of Point Richmond lying west of the railroad.

The streets now known as A, B, and C Streets and Garrard Boulevard were designated on the map as Spreckles, Santa Fe, Atchison and Topeka Avenues. The propaganda setting forth that the San Francisco-San Joaquin Valley Railroad was to be the "Peoples Road" to deliver them from the bondage and monopoly of

(next page )



# ♦ CIVIC NEWS ♦

## ! POINT LETTERS ANSWERED!

This letter from Mr. Wilson of the city's Recreation and Parks Department, comes in reply to the many letters sent by Point Richmond residents concerning the playlot on Washington Avenue:

Dear Mrs. Roselius:

As most of the letters which we received concerning Janice Playlot at the corner of Nicholl and Washington Avenues did not have senders' addresses, we are taking this opportunity to respond to all of them concerning the problems of this facility.

We concur that the facility is in dire need of refurbishing. Mr. Lindsay Strout, Parks Superintendent, had this project on his work program for this past summer. However, due to shortage of manpower and unforeseen vandalism problems, we were unable to meet our work schedules.

It is the intent of the Parks Division to restore this facility to a condition better than previously enjoyed. We propose to complete this work by April 1, 1968, providing we are not delayed with the persistent rains which were experienced last season.

We have not forgotten the needs of the area for adequate facilities. We share your distress and are sympathetic to your comments.

Sincerely yours,  
(Signed)  
Thomas M. Wilson  
Recreation & Parks Director.

~~~~~

"A jest, a laughing word often decides the highest matters better than sharpness and seriousness."

---Horace

3.

## THE POPPING POINT

For a "sleepy little village by the Bay", the Point Richmond business District is rapidly becoming the busiest district in the area. While buildings are being pushed to the ground in Richmond proper, they are popping up in Point Richmond. Besides the shops opening soon in the Old Firehouse, and the Coffee Shop on Washington Avenue, an Antique Shop will soon replace the Architects' office vacated by Frank Krueger, and next to it, adjacent to the Mexican Inn, a Boutique is planned.

~~~~~

## A FILM ABOUT RICHMOND

The Richmond Planning Commission now has available a Slide-Talk, complete with taped commentary, which covers the highlights of the adopted Richmond General Plan. Professionally produced and narrated, it runs about seventeen minutes, and is presented by the Richmond Planning Commission and the Richmond Citizens Planning Association.

A member of one of the above groups will be available to present the program and answer questions about the plan. If any organization is interested in scheduling this program, please call the Richmond Planning Department, at City Hall: 232-1212, extension 441.

~~~~~

## JFK MEETS THE PTA

The first meeting of the John F. Kennedy High School P.T.A. will be Tuesday night, September 26, at 7:45. Speaker for the evening will be JFK principal, Mr. Lovett.

~~~~~



(continued)

the Southern Pacific Railroad which was then the only road reaching the Bay of San Francisco or traversing the great San Joaquin Valley, was a shrewd move on the part of the Santa Fe people, for they succeeded in getting quite a large popular subscription for the stock and many advantages in obtaining the Right of Way. The building of the road exhausted the funds raised by the sale of stocks and bonds issued, and the Santa Fe Company very accommodately stepped in and furnished a ferry boat (The Ocean Wave) rolling stock and other equipment, and took over the management of the road.

The first through train from Chicago over the Santa Fe arrived on July 3, 1900, about noon. Captain H.P. Lauritzen was in charge of the ferry boat Ocean Wave, waiting for the train.

Prior to the arrival of that overland train, Lyman Naugle, Richmonds grocer, first newspaper publisher and first postmaster, had arrived from somewhere and had established himself and family in a small building on the north side of what is now Barrett Ave. between A and B Streets.....Next: MORE ABOUT MR. NAUGLE, and the SETTLING OF RICHMOND....(Last in this series)

The Following Week : A

Return to Mr. Church's Newspaper Excerpts.

wwwwwwwwwwwwwwwwwwwwwwwwwwwwwwww

### YOUTH GROUP LEADERS' TRAINING CLASS

One of the finest services performed by the Richmond Art Center is this class, offered free of charge to anyone wishing to work with youth groups. The class begins October 4, and is conducted each Wednesday, with two times to choose from: 9:30 to 11:30 a.m. or 7:30 to 9:30 p.m. Taught by Alice Ross, skills in String and Object Printing, Halloween decorations and masks, Thanksgiving decorations, Christmas decorations will be acquired by anyone who thinks they might be working with youth groups. The last class in the series is December 6.

OVER the

5.



There is absolutely no truth in the rumor that dignitaries from Washington visited our fair city unannounced lately and rushed back to the capitol to have downtown Richmond declared a disaster area. Barrett Avenue just looks like a bomb hit it. And those "For Rent - Choice Location" signs in empty buildings along Macdonald were old and fly-specked when they were purchased. Besides, anyone who reads a local daily paper knows that the editor would never allow anything unkind to be said about Richmond.

△△△△△△△△△△△△△△△△

Equally untrue is the story that Cutting Boulevard will someday be a lovely, landscaped, tree-shaded boulevard. When the current obstacle course is removed, someone will decide that all the power lines must be underground.... Then it will be time to widen it to accommodate the new off-ramp of the new freeway.... And so on, and so on, and so on.

△△△△△△△△△△△△△△△△

A little known fact is that Walter Paasch is growing quite a garden. He's even harvested an early crop. What he doesn't know, because some people won't tell him, is that some people are using special soil nutrients and plant fertilizers.

△△△△△△△△△△△△△△△△



# 6. NOTES ON DOGS.



People have all kinds of pets, from aardvarks to zebras, but the pet most loved has always been the dog. The dog is the most easily domesticated of all animals, due to three factors intrinsic in its nature: the need for companionship, the need and acceptance of leadership, and the need to work for its living. The horse, the cat and some other animals have two of these needs, but never all three.

A study of wolves, ancestors of the dog, reveals the basis for this theory. The wolf will group in a pack of up to fifty animals. The need for companionship is dictated by facilitating hunting efforts and the need for protection of the species. Within this pack, a leader emerges, whose leadership was established by a fight-out among all the able bodied males. The winner, the strongest male, becomes the respected dictator of the pack. He directs the physical work to survive, or the Chase Instinct, which is a community hunt, in the proper way. The rest follow submissively. A respect for authority is essential to his survival.

Animal psychologists make use of these observations in training animals. A dog is always a willing companion. He will be devoted to his master. The ultimate

in devotion may be the story of Greyfriars Bobby, a Skye Terrior in England that followed the remains of his master to the churchyard and lingered near the spot for fourteen years until his own death.

A dog sets up a hierarchy of leadership within his human family. A strong leader can exact instant obedience from his dog. A weak owner will put the onus of responsibility on a dog who may be ill equipped to handle it. He reacts with tension and anxiety which takes the form of barking or biting.

Dogs have been trained for many purposes, but the fact remains that they are primarily - a friend.

--Gerrie Kretzmer.

~~~~~

The Mariner Girl Scouts are preparing for their "Gam" in October; In order to practice for it, Mariners (15 of them) from this area will stay at the Dornan's cabin at the Russian River this week end.

Mr. Joseph Spinola had the sad duty of attending the funeral of his great nephew, Gary Peter Bruce, 19 months old, of San Leandro, who at 18 months was burned in a gasoline fire. The funeral was Wednesday, September 20, in Hayward.

OPEN 7 DAYS A WEEK  
**4-CORNERS CAFE**  
35 EAST RICHMOND AVE.  
DINNER STEAKS • CHICKEN • HAMBURGERS  
■ ■ DONUTS MADE DAILY ■ ■

  
**BAR &  
LIQUOR  
STORE**  
1 STANDARD AVE.  
232-6769  
OPEN EVERY DAY  
**Quality Liquors**

**SANTA FE**  
*Market*  
  
FINEST SELECTIONS  
of MEAT, PRODUCE  
AND LIQUORS  
155 W. RICHMOND 234-2409

**RON'S** *Market*  
beer & wine *Fresh* PRODUCE  
MEAT