

POINT COUNTERPOINT

A JOURNAL FOR CIVIC COMMUNICATION

VOL. V~NO. 9

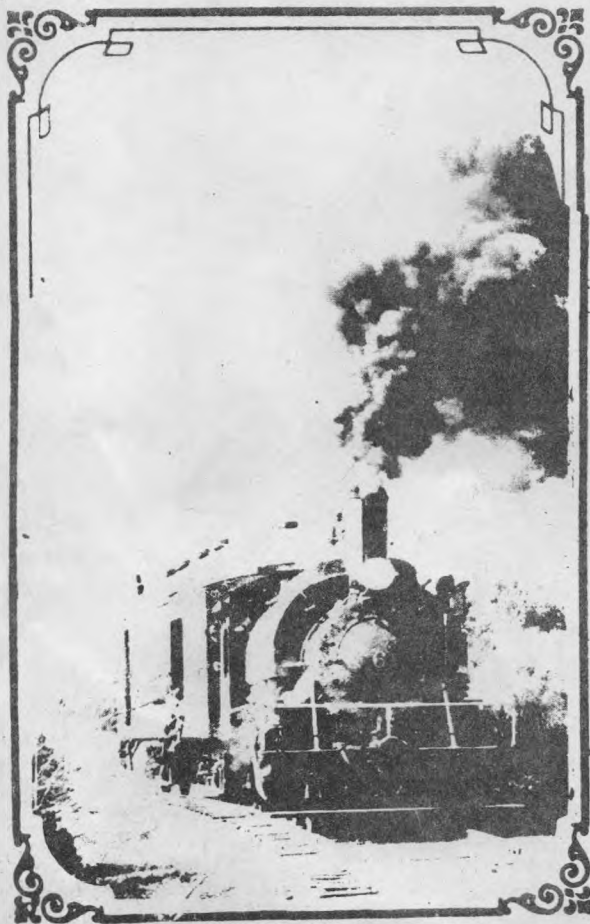
JUNE 5 TO 12, 1970

WEEKLY 10c

POINT RICHMOND, CALIFORNIA



1. A RAILROAD MUSEUM IN POINT RICHMOND?



A growing, active and fascinating museum is very close at hand for residents of Point Richmond. It is the Castro Point Railway Museum, the only standard gauge, steam powered, club-owned operating railroad museum in northern California.

The museum is owned, cared for and added to by members of the Pacific Locomotive Association which was formed in July, 1961. A non-profit educational organization, it exists for the purpose of recognizing, cultivating and maintaining in its members, an enjoyable interest in the knowledge and actual operations of locomotives and equipment of the various pacific coast railroads.

The museum began operating the Castro Point Railway little more than a year ago, and through a great deal of renovation work, the railway, which is nearly two miles in length, became useable. A former Richmond industrial railroad, once hidden under weeds, brush and earth slides, the tracks begin at the museum's shop and terminal facilities off Point Molate Road, at the Richmond end of the San Rafael bridge, and continue along the edge of the bay for two miles. The museum also has a direct rail connection with the Richmond Belt Railroad.

As a relatively small organization, the Pacific Locomotive Association, inc. is able to offer many interesting and unusual rail trips to members, friends and the general public. Under its sponsorship, trips have been made behind double-headed Mikado-type steam locomotives on the Yreka Western Railroad, through heavy winter snows in the Mount Shasta region behind McCloud River Railroad's legendary 2-6-2 No. 25, and across the deserts of eastern Nevada behind Nevada Northern's high-wheeled 4-6-0 No. 40. They have gone to Oregon to ride behind steam on the Coos Bay Timber Company, and sponsored pioneer operations on tourist steam roads like the Roaring Camp and Big Trees and the Klamath and Hoppow Valley, ridden behind the steam and diesel "skunks" of the California Western, and operated field trips on such out of the way industrial lines as the Granite Rock Company and Kaiser Sand and gravel. They sponsored the last steam operation on the now-abandoned Feather River Railway as well as the last run of West Side Lumber's famed Heisler No. 3 at the now-gone Tuolumne mill. While steam power has figured heavily in their excursions, (they now own one of the first engines they rode behind -- the Howard Terminal Railway No. 6), they have also catered to electric fans with a final run of the Sacramento Northern's last electric operation at Marysville, and have kept the diesel enthusiasts satisfied with trips that have included the first and only passenger operation of a Southern Pacific Krauss-Maffei diesel-hydraulic, and the last run of a Santa Fe Alco PA unit in West Coast passenger service.



CONTINUED. PAGE 16.

DOUBLE BILL

Opera

From sparkling comedy to classic Greek tragedy in one night, is the program offered by the Merritt College Opera Workshop, the College Choir, College-Community Orchestra and the Oakland Ballet Company.

Two one-act operas, the modern "Old Maid and the Thief", and the classic "Dido and Aeneas" will be presented tonight, (Friday) and tomorrow night (Saturday, June 6), at 8 p.m. each night, at the Oakland Auditorium Theater (Tenth and Fallon). Admission at the door is \$2.00; however, some complimentary tickets are available; call 235-4222 if you want tickets.

MEDIEVAL

DRAMA

The Play of Daniel, a medieval Liturgical Drama, re-created with a chorus of adults and children, ancient instruments and modern dance, will be presented on Saturday June 6, at 8:15 p.m. at the First Unitarian Church in Kensington, (1 Lawson Road). The rare performance of a thirteenth-century predecessor to Opera will be a unique experience.

STAR GAZING

A last-minute notice about a "Star Party" to be conducted at Sunol Valley park Saturday, June 6 may be of interest to amateur astronomers. Beginning at dusk, star viewing accompanied by a short naturalist talk on constellations and other celestial objects will be enhanced by William Roberts, an astronomy buff, who constructs his own telescopes, and will have some on hand. In case of heavy cloud cover (and right now that looks likely) the party will be postponed to June 13. The park is just off route 680 in southern Alameda County.

ART

In progress now at the Richmond Art Center is an exhibit by students at the Center, and steel sculptures by George Neubert, as well as "Esther's Sugar Bread Room" by Robert Harv-

2.

A FAIR OF FLOWERS

Beginning today, and continuing through Sunday, from 10 a.m. to 8 p.m., the Second Annual Flower Fair will take place in San Francisco, at the Hall of Flowers in Golden Gate Park.

NEW P.T.A.

For those parents of students who will attend Harry Ells High School next year, Monday, June 8 at 7:30 p.m. will be the time to meet teachers, sign up as a charter member of the PTA, and elect officers for the coming year.

The meeting will take place at the School at room 400.

Art Center CLASSES

On Monday, June 8, adult registration for summer classes at the Richmond Art Center will begin. Hours are 10 a.m. to 4 p.m., and 8 p.m. to 9 p.m.

On Wednesday, June 10, during the same hours, Teen and Children's class registration will take place. A great variety of classes are being offered, so drop in at the Art Center for the complete schedule, or call 234-2397.

One of the new programs available at the Center is a series of field trips, which each week will visit a major museum or gallery in the Bay Area.

Air Pollution Board HERE

On Wednesday, June 10, at 10 a.m. at the City Council Chambers at Richmond City Hall, the promised meeting of the Bay Area Air Pollution Control Board will take place. At this meeting, they will hear a staff report on air pollution in Richmond. This is a result of the March meeting in Richmond, at which the Stop Smog Committee and other criticized the District for allowing the air in Richmond to be bad so long. They charged that day also, that Standard Oil has been "blowing its stacks" for years, to clean carbon from furnaces at

3. Air Pollution Board Meeting, cont.

night, when it could not be observed. The District is to report on their findings in regard to the charges made.

A good turnout for the meeting of the District Board will be important, to show concern of the citizens of Richmond about air pollution.

The Stop Smog Committee chairman, Kathy Lord, has testified before Assembly Local Government Committee in favor of AB 641, a bill which proposes to make the Air Pollution Control Board directly elected by the people. The measure has gone to the floor with a "do pass" recommendation, in spite of objections by County Supervisors, the League of California Cities and a city of San Francisco lobbyist.

The Stop Smog committee has been actively engaged in publicizing the need for greater controls. They need funds for further work, and anyone interested may contact Mrs. Lord at 235-6514, or write to the Stop Smog Committee at 300 Nevada Avenue.

the "Animal Fair"

Next weekend, on Saturday, June 13, the Annual Farm Fair at Tilden Regional Park's Little Farm will offer you the opportunity to attempt ascending a greased flag pole (the ir version, perhaps of catching a greased pig), or participating in a sack race or a tug of war in the old-time country flavor of a country fair. Master of ceremonies Tim Gordon, has urged everyone to come dressed for the event, in farm-type clothing.

Prizes are given, as in most country fairs, for hand-made items -- last year, for instance, prizes were given for baked goods, and other home-made articles. Puppet shows, music and dancing in the meadow, besides audience-provided entertainment will provide ample entertainment for the Fair, which begins at 1 p. m. and continues until 5:00. Everything is free, and fun for the whole family. The Little Farm is always fun for kids, but special treats, like watching a lamb being shorn, and then seeing the wool spun into thread, are special treats not seen at every visit. Further information may be obtained by calling 524-1034.

ABOUT SCHOOL:

AN EDITORIAL

It is difficult, but, we believe, necessary, to write an editorial concerning Washington Elementary School. Because of a letter recently sent to some parents and people in the community by a group calling itself the "Washington Parents Association". The letter makes strong statements against the school's administrator and the School administration in general, and in doing so overstates, misstates and draws unfounded conclusions concerning class size, transportation, and school equipment.

Because I have had the opportunity to visit more than half of the grade schools in this District during this year, while demonstrating musical instruments, I feel able to reply to the complaints of this group, which feels that our school is not treated "equally". Judging from statements of other PTA's, teachers and principals, our school is treated at least in an average way by our administration. Other schools are losing teachers; other schools have the same, and some more serious problems; of the last three schools I visited, two were to lose two or three teachers next year, one was to lose 5. And yet, the parents of those schools did not attack the administration; they voiced concern as our PTA has done (a meeting with Mr. Lovette was recently held by our PTA).

The one unignorable difference between Washington School and the other schools I have visited this year was the attitude of parents, and the activities of the PTA's. In the other schools, parents were busy in positive programs, helping to enrich the children's education by assisting with transportation, with extra programs which they helped provide, and with extra duties performed at the school. In Washington School during this year when a "parents association" was formed, very little participation or positive help was forthcoming. Negative reactions, criticism and attack rarely bring anything positive to the children, whereas parent participation in positive programs benefits those about whom parents should be concerned -- the children.

(continued, page 5)

REMINISCING

4

FIFTY YEARS AGO.

articles from old Richmond newspapers
courtesy Rosemary Corbin and the Richmond
Library.

June 5, 1920....

CHAUTAUQUA OPENS SUNDAY.... EXCELLENT PROGRAM FOR SEVENDAYS

"The Richmond Chautauqua, presented by the Ellison White system, will open Sunday evening in a big tent to be located at Tenth street and Nevin avenue...many nationally and internationally prominent entertainers and lecturers will appear on the program...."

June 5, 1920....

MAYORS AND CITY COMMISSIONS TO DECIDE WATER PROJECT PRO- CEDURE WITHIN WEEK.

"The method of procedure in developing a water system for East Bay cities will be decided on at a conference of mayors of Oakland, Berkeley, Alameda and Richmond, with a councilman or commissioner from each city as additional members of the committee..."

June 5, 1920....

CITY FIGHTS COST OF DOUBLE TRACK SUBWAY...

"Whether the city of Richmond will bear half of the cost of construction of a subway under the Santa Fe tracks across Sixteenth street for a single or double track was the question argued before the Railroad Commissioner....."

June 9, 1920...

ACID PLANT TO BE READY SEPTEMBER 1....

"The new sulphite acid plant of the Stauffer Chemical Company at Stege will be completed and in operation by the first of September, barring unforeseen material or labor shortage... Work on the new plant, which will cost approximately \$1,000,000...has been very satisfactory..."

Population report: "San Francisco has 508,410; Los Angeles, 575,480."

June 9, 1920...

ELKS WILL HOLD FLAG DAY EVENT NEXT MONDAY...

"An impressive program for Flag Day was announced last night...with former District Attorney of Alameda County to deliver the oration...selections by the Elks orchestra, ritual work by the lodge officers, etc..."

June 9, 1920...

"PROCTER & GAMBLE, FOOD AND SOAP MFGR'S., SELECT RICH- MOND FACTORY SITE; SANTA FE AND S.P. TO BUILD LINES TO HARBOR..."

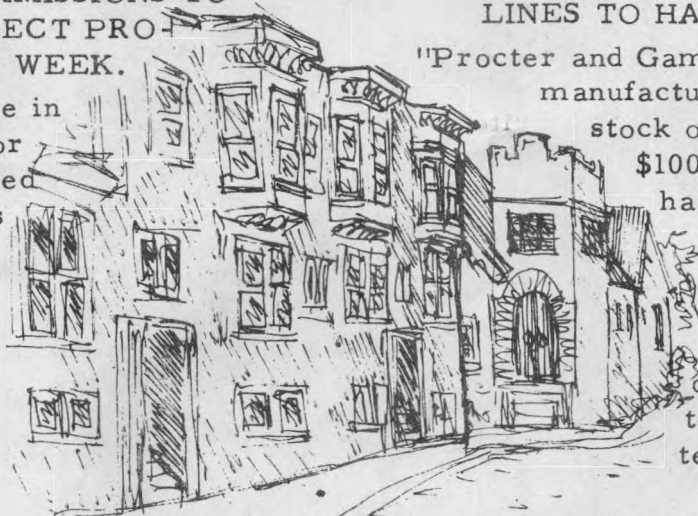
"Procter and Gamble, world famous manufacturing corporation, the stock of which is listed at \$100,000,000, and which has millions invested in plants, has selected Richmond as its Pacific Coast location and will erect here one of the largest factories and shipping terminals in America."

"All the immense copra oil shipments of the company, as an instance, will be diverted through the port of Richmond."

"The corporation will spend \$2,000,000 and probably \$3,000,000 during the first two years on its Richmond plant. It will employ 500 hands at the opening and it is expected that it will not be a great while before 1,000 are at work."

"The Richmond Industrial Commission has secured this plant for Richmond after negotiations extending over four years..."

"After a thorough investigation of the outer waterfront...a look was taken at Wharf no.1 of the inner harbor project. This appealed to Anderson, the eight acres of filled land behind it being a nucleus he thought could be added to...Moran then drove the manager...up to Nicholl Nob, where they had a full view of the harbor...and the channel already dredged. That information saved the day."



5. (Editorial - continued)

The negativism has permeated the atmosphere, and has made it difficult for those who would normally do more ... people tend to avoid unpleasant situations.

As for the loss of two teachers at our school, this is a projected loss, which may change depending on school enrollment next year. Enrollment figures are never certain until the fall of the year. You cannot force people to move in the spring, and enroll their children. However, based upon the drop in enrollment this year at Washington, the school will probably lose two teachers. Last year, the enrollment began at 439, and remained over 400 during the year. This year the enrollment is 372 at the present time, and the school is most fortunate to have very small classes. The enrollment for kindergarten for next year is at this point only 25. Statements made by the newsletter concerning specific numbers of class size increase are simply unfounded at this time.

We would like to see energies put forth to promote school functions and programs, to enrich education, rather than tear down programs that already exist. One statement that has been made a great many times by a great many people is that the group which appears en masse to complain is not the group which comes to help, to work, to enroll children or promote extra curricular or enrichment programs. Many are not parents, and do not attempt to become acquainted with the school and its programs.

We extend this one suggestion: before complaining, criticizing, or signing a petition of any sort, do something positive; become involved in activities which may help Washington School. Parents and the community should be involved in education: constructively..... you might even join the PTA!

SUMMER FUN

The YWCA of Richmond will provide an extensive summer program for women and girls, with classes ranging from tennis to yoga, from creative crafts to chinese cooking for women; and summer fun programs with outdoor cooking, arts, swimming, etc. for girls. Special interest classes are also available. Call them at 234-1270.

Rockhounds!

The Berkeley Gem and Mineral Society offers activities for rockhounds, no matter what phase of the hobby interests them.

A non-profit educational group, the Society holds meetings every second Thursday of the month, except in July and August at Whittier School, Milvia and Lincoln Streets, Berkeley at 8 p.m. for adults, and 7:15 for juniors.

Information about the Society may be obtained from one of its active local members, Mr. Clare Bryant, 601 Golden Gate Avenue, telephone 234-5146.

Activities include monthly field trips, an annual picnic, an annual show called the "World of Gems", exhibiting the collections and crafts of members and guests; and varied speakers at the meetings. They coordinate their activities with neighboring societies, so that they may visit their functions, learn from them and their activities.

The "Berkeley Mineralmites", the junior group is very active, and invites new members also.



THE BOYS' SOFTBALL TEAM

finished second in their league with a 4-win, 1-loss record. A recap of the season shows a 12-3 win over Peres School, 4-3 win over Shields Park, win over Belding and Woods Schools, who failed to field teams against us; and finally, a 9-4 loss to a combined team of Lincoln School, Fourth street Library and Memorial Park in our final game. The team consisted of over 20 youngsters, who attended Washington School.

THE PLAYGROUND WILL CLOSE JUNE 11, AND WILL RE-OPEN JUNE 29, WITH A 10:30 to 5:30 TIME SCHEDULE.

As this will be our last article until Summer Vacation begins, we would like to take this opportunity to express our thanks to those persons who have helped and supported us throughout the school year. Also, a very special thanks to the Point Counterpoint for its most valuable publicity.

WE WOULD ALSO LIKE TO PUT FORTH AN INVITATION TO ALL CHILDREN who have been attending the playground program, and to all those who don't attend regularly, or have never been, to

VISIT THE
PLAYGROUND
THIS SUMMER!

We think you will find it enjoyable. And to the community, as a whole, a reminder: That the Recreation Programs' success depends directly upon the support that you give it.

Thank You...

Judy Davis & Harold Crawford
Playground Leaders.

Summer Take-Off

If you're planning to do some special things this summer, here are a few suggestions for family fun:

A BUS NAMED SQUIRREL, a tour bus with a hostess who narrates and even sings for the passengers, tours the redwood country in a day long jaunt from Garberville to the mill town of Scotia.

Traveling along the Avenue of the Giants and through many scenic areas, with stops along the way, the bright red bus will begin operating on June 22, and continue through September 25, on Mondays, Wednesdays and Fridays. Round trip fares are \$4.50 for adults, and \$2 for children. Reservations may be obtained from southern Humboldt County resorts and motels, or by writing to The Squirrel, Redwood Drive, Garberville, California 95440, or phone (707) 923-2379.

DAILY CAMERA WALKS will be conducted in Yosemite by photographer Dana Morgenson. Walks are free. All you need is a camera and eyes. They start at 9:15 daily, and return by noon.

An Ode to warm Hearts and cool Heads

by Ethelyn Milton

Be still, my Heart, for far too long

I've let you rule my Head.
Enraptured by your singing,
I have followed where you led.

But we know he promised to
call at six

But that was yesterday
And now it's after 10 P M
Still . . . if you want to pray

Just one more time for the
phone to ring

I will give you this last chance
And if your magic works again
I'll forget my Head, and dance.

I know he's been your bread
and wine

And he is a gourmet dish,
But my Head has long been
telling me
That Sometime isn't Bliss.

And so, my guileless loving
Heart

I think your day is done,
And isn't he going to be surprised

When he finds my Head has
won!

the accompanying sketch, and others appearing here and there, signed "Ginger", have been contributed by Wanda Sarsfield's daughter Ginger, who is visiting for the summer, from Dallas, Texas.





HAPPY BIRTHDAY

Mike Allaire

Geoffrey Williams

Pat Cheyne

Daniel Weinstein

Victoria Foye

Charles Courtright

անանանանան



It has been proven beyond doubt that with reasonable care, the human body will last a lifetime.

անանանանան

If at first you don't succeed, you'll get a lot of unsolicited advice.

անանանանան

IT'S A GIRL for Mary and Ray Giacomelli. Born on Monday, June 1, she has been named Rosemary. Congratulations to the happy household.

անանանանան

A very special "Happy Birthday" to Charles Courtright who celebrates his 89th year on June 11. He still saws wood for his fireplace, often bringing it up two flights from the beach. We are wishing you at least a full eleven more special birthdays.

անանանանան

Visiting the Bill Macdonalds on Crest Avenue last week were the Clinton Rudolphs, from Newcastle. She is the former Mary Harlow, formerly of Point Richmond, and a Washington School graduate.

անանանանան

Graduating June 14th from UC Santa Barbara, will be Pam Poulsen, daughter of Dr. and Mrs. Stan Poulsen.

անանանանան

Did you hear about the neighbor who was so wealthy he didn't even know his son was in college?

անանանանան

Happy anniversary to Joe and Judy Travis, and Gary and Frances Smith.

անանանանան

The Scouts from Troop 111 thank all of you who purchase tickets to the FAMOUS ANNUAL PANCAKE BREAKFAST on Saturday, June 13, at the Methodist Church. Each sale benefits the individual boy 25 cents toward camp, plus the fact that the rest of the breakfast profit enables the boys to enjoy ten days in the mountains pioneer camping for about \$20. Bargain rates, these days.

անանանան

Scout meeting was dismissed early Monday to let boys canvas the area selling tickets. Super salesman John Kinter, after ringing about 50 doorbells returned in a little over an hour having been successful in selling 30 tickets, and eager to try for more!

անանանանան

Watch for an announcement concerning a family style lasagna dinner at the Methodist Church Soon.

անանանանան

Barbara Quien will be honored at a 'Bon Voyage' party Saturday at the Russell Blackwell home in El Cerrito. Barbara leaves Monday to spend ten days in New York - Boston area where she will attend plays and sight-see before flying the 747 to France to attend a wedding. She will continue to tour Europe, planning to return in September to finish her student teaching in Colma.

անանանանան

Candid conversations: "When I retire, you'll not find me moving to the mountains away from the doctors or specialists... I think I'll move close to the county hospital!"

"At my age I never leave the house unless I'm wearing beautiful underclothes... I never know if I'll collapse before I return!"

անանանանան

Election days are always brightened at the Baptist Church when Harry Moll arrives to cast his ballot. He provides "Music to Vote By".

անանանանան

Wearing a colorful hot pink-yellow-green paper chemise dress, Jackie Watkins proceeded to a luncheon in Concord on Tuesday with the promise to be a conversation piece.

անանանանան

(next page please)

OVERDUE: (according to many who congregated while waiting to vote on Tuesday) A reunion of the highly successful people who have been born and raised on the Point.

~~~~~

Does Francis Wilson still take time to practice his drums? When he was still in Junior High he excelled on the drums and, in fact, was so talented he was offered the opportunity to go around the world, but somewhere Father persuaded him to stay home and continue his education.

~~~~~

Her many Point friends send regards to Mary Tranbarger in Florida.

~~~~~

As soon as she can find time to pack and buy her ticket, Dorothy Selzer will fly back to Newmilford, Connecticut, to visit her daughter, and family, the Tom Abbots.

~~~~~

Six members of the 'jet set' (?) had lunch in Concord on Wednesday with Hazel Newman. They were Helen Valentine, Edna Hathaway, Dorothy Selzer, Uldine Nickola, and Christine Dennis.

~~~~~

Only parents who have experienced the joy of having a child graduate from college can know the emotions being emitted in our household when daughter, Pat, transfers the tassel on her mortarboard at Sonoma State on Friday!

~~~~~

It is good to see the faces of the college students returning for the summer -- Welcome home!

~~~~~

'This year,' said the doctor to his patient, 'I'd like you to skip your vacation and get a good rest.'

~~~~~

Members of the Methodist Church will honor three of their graduates at breakfast on Sunday: Douglas Cheyne, who has been accepted at Contra Costa College, Mike Wear, who will either go to college or go into the military service, and Pat Dornan who will enter the credential program at Sonoma State.

~~~~~

John Steinbeck declared this as the most feminine story he ever heard:

Two women meet. One cries, "What have you done to your hair? It looks like a wig." "It is a wig." "Well, you'd never know it!"

~~~~~

Point TEENS

by Arthea Senger

As much as we love the Center and the teens, a three-day Memorial Day weekend was very nice. I spent the time at the family cabin in Cazadero's redwood valley. There is no cooler spot on a hot day, than sitting under a gigantic redwood.

This Friday night the Richmond musician's union has donated the services of a professional group, "J.G.G. and the New Breeds." This fine group will play from 9:30 to 12:30. There is no charge. Come down and hear some good music, parents.

We have new plans afoot. The Center teens have received permission from Lynn Strout, Superintendent of Parks, to replant the area around the center. The city will supply the plants as soon as our plans are made. Is there any local landscape gardener who would like to help us with the planning?

We still need some chicken wire and 4' by 4's for our garden. Call 232-6140 and the teens will pick up the items.

1 AWARDS

The Awards Banquet at Roosevelt Jr. High was enjoyed Thursday evening as one of the last events to take place at the school.

The printed program featured the art work of Melissa Allyn and Craig Healy, and after the banquet, the awards included these students from Point Richmond:

Rally Committee: Peggy Wilson.

Art Awards: Mike Allaire, Geoffrey Williams, Craig Healy, Paul DeBenedictis, Marion Tedrick, Melissa Allyn, Kenneth Bash, Jodi Roselius and Jeffrey Peterson.

Roosevelt Royals: Melissa Allyn, Roni Roselius.

Rams Head Award: Geoffrey Williams.

Kiwanis Club Award: Melissa Allyn, with Geoffrey Williams runner-up.

A Point honor student left out last week: Dianna Loretz.

HERE & THERE

with Dorothy King

Ben and Dorothy Werner from Michigan were here for a short visit with their nephew and family, John Werners. This was the first visit with their nephew in 24 years.

Jim and Nancy Anderson enjoyed a weekend at Lake Tahoe during the Memorial Day Weekend.

The Darrell Mitchell family have moved to their new home in Tara Hills. We wish them good luck.

Helen Francisco suffered a fall during her vacation at Lake Tahoe last Thursday, and required four stitches in her lip, and suffered ear damage. She is now recovering nicely.

Mr. and Mrs. T.J. Spillman have been on a travelling vacation to Texas. They are expected to return soon.

The Point was well represented at a benefit dinner for the East Bay Music Center on Wednesday. Enjoying the "Gourmet Elegant Edibles" feast were Mrs. and Mrs. Bill Miller, Mr. and Mrs. Jack Stoddard, Mr. and Mrs. Lloyd Farley, Mr. and Mrs. Basil Cherniak, Mr. and Mrs. Gary Steyaert, and Mr. and Mrs. Ronald Roselius.

Congratulations to Diane Wear, who is a member of the Don Quixote Scholarship Society at DeAnza, and has received special honors at their annual dinner in the form of a scholarship. Diane also was announced as the ninth grade Girl of the Year and awarded a \$25 check and certificate.

Visiting for the summer is Ginger Scott, from Dallas, who is staying with her mother, Wanda Sarsfield.

Harold Vaughn who is to graduate from the Berkeley School for the Deaf is in Brookside Hospital following an automobile accident.

10.

Julio Ely, of Nevada Avenue is recuperating from a motorcycle accident.

The Masquers Playhouse needs young singers for their new Musical, "Little Mary Sunshine." Please contact Jo Camp at 843-2740.

SWIM

Most of the summer swim sessions at the Plunge begin on June 22. Registration for special classes will take place on June 16, 17 and 18.

FREE lessons are offered to residents of Richmond, with daily classes (Mon. thru Fri.) at 9, 10 and 11 a.m., and 12 noon. Skills taught are beginner, intermediate, swimmers, junior and senior lifesaving and water safety aide, and junior skin diving.

Tiny Tots Programs will be held on Monday and Wednesday during the first session, from June 22 to July 22.

Synchronized Swimming will be held on Mondays from 1:30 to 3:30, June 22 to August 24.

Special Family Swimming will be on Mondays, for 10 weeks beginning June 22, from 7 to 9 p.m.

Public Swimming Hours, from June 22 thru August 28, will be:

Tuesday Thru Friday, 2:30 - 5:30 and 6:30 to 9:00.

Saturdays, Sundays and Holidays, from 10 a.m. to 1 p.m. and from 2 to 5 p.m.

The cost is 50 cents for adults, and 25 cents for children. Ticket books are available, for a reduced rate.



F.D.R. PALACE

35 WASHINGTON
HOURS: MON. thru SAT. 1:00 - 5:00

Point International IMPORTIQUE SHOP
111 V. Richmond 234-6668
Tues.-Sun. 11:30 - 8:00 CLOSED MONDAY

MOBILES
ZODIAC PEACE

KENNETH S. JANES
INTERIORS
115 PARK PLACE 232-1551

SOPHIE'S 151 PARK PLACE
OPEN 12 TO 6 TUESDAY THRU SATURDAY

For the patio... pool... or parlor...

visit

WAX 'N WICKS • 36 WASHINGTON AVE.

EMISSION OMISSIONS

An interesting article recently appeared in the San Francisco Chronicle, strongly refuting statistics by "experts" claiming that auto emissions are responsible for from 65 to 71 per cent of air pollution content.

Dr. A. J. Haagen-Smit of Cal Tech, who is credited with the discovery of the process of auto-caused smog, claims that the California Bay Area officials are playing a numbers game with the public about the auto's contribution to air pollution. In view of successful air clean-ups by St. Louis, Pittsburgh and London, without touching the motor vehicle, it would seem that Dr. Haagen-Smit's statement that the high percentage attributed to autos being "absolutely untrue" has some merit. He claims that the figure is 35 per cent, and declares his facts to be "absolute."

He is not defending automobile-caused pollution, but charges the Bay Area Air Pollution Control District with not being strict enough in the area that they can and should control, the stationary causes of smoke and odor pollutants.

Castles in the Sand

You can build the most fantastic palace in the world, as long as you build it out of Alameda Beach Sand, on June 20, for the annual Sand Castle and Sand Sculpture contest. Sand, wood, rocks and shells found on the beach may be incorporated into the sculptures or castles created that day for the competition. Three categories are available to participants: family groups, groups over 11 years and groups ten years and under. Prizes will be awarded at the end of the day, and Smokey the Bear will be present to hand out comic books and smokey-bear pins to children. There is no entry fee, and everyone is invited to the contest, at Alameda Memorial State and Regional Beaches.

Letters

Following is a letter to the Chairman of the School Board, Mr. Fuller, in reply to his reply to Mrs. Edward's request to appear before the Board. (Obviously, his reply was in the negative, or this reply would not have been written.)

Besides being a specific reply, the letter may be of general interest, because it supplies a fairly comprehensive background on the area to become a shoreline park, and its progress to this point.

Dear Mr. Fuller:

It has always been my understanding that, under our democratic form of government, a citizen may address himself or herself to a wide variety of public forums in order that a fair and open hearing may be afforded in the case of a grievance, complaint or misunderstanding. It has also been my understanding and experience, that invariably a request of this sort is courteously granted. Therefore I am sorry that you saw fit to deny me a place on the agenda of May 27th Board meeting, since it is obvious from your letter that you are ignorant of some of the facts in the matter which I wished to discuss with you. I must also (hopefully) attribute the letter which I wished to discuss (written by Dr. Snodgrass to City Manager Smith) to ignorance, as I should not like to assume that it was motivated by malicious mischief or a flagrant disregard for private property.

Since I was not afforded the opportunity to explain my concern to you in person, I am obliged to take this means of clarifying the situation for your enlightenment.

For many years numerous groups have worked diligently for a Bay Shoreline park in Contra Costa County, when Contra Costa County joined the Regional Park District in 1964, one of the terms of the agreement was that such a park would be developed by the District in West Contra Costa County. After several sites had been considered, the hill and shoreline at Point Richmond was the area chosen, and currently, following lengthy negotiations with the Santa Fe Railroad,

NEXT PAGE, PLEASE

Adam's

Eden



HAIR DESIGNS

139 park place
237-9860

STACEY WELLS

Hair Shaping

FOR MEN: TUESDAYS

FOR WOMEN: WED. thru SAT.

NEW SELECTION OF SUMMER
HALF-SIZES ... 14½ TO 24½ ..

ARNES ... SEERSUCKERS ...

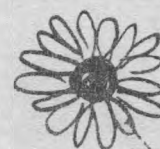
MANY ASSORTED COLORS,

STYLES ... FABRICS

SIZES ... FOR A

COOL. CRISP. CARE.

FREE SUMMER.



SHERRY & BOB'S

201 W. RICHMOND • 237-8008

Jethrus COFFEE HOUSE
 11 AM - 10 PM.
 130 WASHINGTON AVE
 POINT RICHMOND

Continental
 Coffees
 espresso
 borgia
 cappuccino

Gifts
 Sandwiches
 jewelry
 sculpture
 art

SPAGHETTI DINNERS 5:30-9:00
 • EVERY EVENING •

OPEN MON thru THURS 11 AM - 10 PM.
 FRI. & SAT 11 AM - 12 P.M.

Call Me
LOUISE HAMMOND
 FOR
 NEW DECORATING IDEAS
 235-6717

FABRICS • ACCESSORIES • FURNITURE • CARPETS • DRAPES

Ally's MEN'S SHOP

ERNST TIES • LEVI'S
 PENDLETON SHIRTS
 JARMAN SHOES
 ROUGH RIDER SPORTSWEAR
 PURITAN SWEATERS

SINCE 1924
 136 WASHINGTON AVE. • PT. RICHMOND
 232-4761

FAMOUS
99¢ Ham & Eggs
open weekdays
 CORNER STANDARD &
 SANTA FE AVES.

TUMBO BURGERS
 110 WASHINGTON
 232-9519

BREAKFAST
 LUNCH
 DINNER

OPEN DAILY 6 AM - 8 PM
 MONDAY THRU SATURDAY

the cherished hopes for this regional park are moving toward realization.

There is great need for such a park since there are so few places on the rim of San Francisco Bay where people can have access to it without trespassing. The park will be of inestimable benefit to our entire area, and to all the people in adjacent cities who welcome the possibility of rest and recreation near the water.

Many individuals and groups in our immediate area and throughout the County have endorsed the proposed park, including the County Board of Supervisors and the Planning, Recreation and City Councils of Richmond and our neighboring cities. When in his letter to Mr. Smith, Dr. Snodgrass referred to "self-serving" and "transient" groups he can hardly have meant these dedicated, altruistic and civic-minded people.

It is true that the Richmond Ramblers have enjoyed the freedom of the Point Richmond hills for the 26 years since the group's incorporation in 1944, but it is also true that they own only a small amount of land on which their clubhouse and parking lot is located. Therefore for 26 years they have been trespassing on the private property of those who own the hill properties. When there were only a few of the Ramblers, no great damage was done to the hills. But with the increasing popularity of motorcycling, and as other communities have adopted ordinances that protect their land from the excoriations of this sport, more and more motorcycling devotees (many of them not associated with the Ramblers) have made a habit of coming to Point Richmond to race, hill-climb and compete. Property owners have posted their land to no avail, since the NO TRESPASSING signs are ignored or torn down. In the last few years the hills have become terribly scarred and eroded, the noise of dozens of heavy motorcycle engines bounces back from the hills and makes the weekends hideous for the residential population, and it has become unsafe to walk on the hills at any time and suicidal on the weekends.

Although many of the young men who are members of the Richmond Ramblers are not residents of the city, as an organization they have been kept well informed of the plans for the park. Knowing that they

will eventually have to evacuate they have been engaged in a search (so far fruitless) for another location for their activities. One of the groups which has worked hard to speed the realization of the Point Richmond Park, the Contra Costa Shoreline Parks Committee, feels that motorcycles are incompatible in the park that is to be used by hikers and picnickers. However, acknowledging the Ramblers' right and need for open space to relocate their clubhouse and activities, the Shoreline Parks Committee has volunteered to help the club members in their search. One area visited is owned by the East Bay Municipal Utilities District and though that agency proved adamant in its refusal to consider having motor cyclists on their land, the Committee has assured the Ramblers of continuing support in their efforts.

The Shoreline Parks Committee felt that an amicable and cooperative arrangement had been established and therefore we were startled, to say the least, when the letter written by Dr. Snodgrass to Mr. Smith was brought to our attention. The reason that I as a representative of the group, asked to discuss this matter with your Board, is that we were somewhat confused as to why the letter had been written, (when the matter seemed to be well in hand) whose opinion was expressed, and who had authorized the sending of it? Since Dr. Snodgrass did not write his letter as a private citizen, but in his official capacity as Superintendent of Schools, using Richmond Unified School District stationary, and apparently, a Richmond Unified School District secretary, we naturally wondered whether this was an official position taken by the School Board. If so we wondered if this means that your Board opposes the proposed Point Richmond Regional Park and condones the destruction of the hills and the irresponsible disregard for the rights of private property owners?

While we can appreciate that "The Board of Education considers that all matters pertaining to school facilities are within the proper sphere of responsibility of the Superintendent of Schools," we really question whether the private properties on the hills of Point Richmond lie within his province, and whether mini-bike instruction

NEXT PAGE, PLEASE

14.



POINT ORIENT RESTAURANT

237-4999
199 PARK PLACE
FINE CANTONESE CUISINE

TUES-THURS: 11:30-10:00
FRIDAY: 11:30-11:00

SATURDAY: 4:00-11:00
SUNDAY: 4:00-10:00

MEXICAN INN



232-9627
109 PARK PLACE

Excellent Food
Take Out Service
GUITAR MUSIC - WEEKENDS

STEAK · COCKTAILS · LOBSTER

BREAKFAST
7:00-11:00
LUNCH ...
11:30-2:00
MON.-FRI.

DINNER ...
5:00-9:00
MON.-THURS.
5:00-11:00
FRI. - SAT.



32 WASHINGTON AVE. 233-4295

BOB SMITH - HIS MUSIC - HIS GUITAR
WEDNESDAY & THURSDAY EVENINGS

SPECIAL STEAK HOUR ...
5:00-7:00
MON.-FRI.

FIFTY WASHINGTON AVE.

233-5380



Famous Original

HOTEL MAC

EST. 1879

DINNER:
5:00-10:00
WEEKENDS
TO 11:00

LUNCH
11:30-2:00

FINE WINES · SUPERB COCKTAILS

15. **THE OLD FIREHOUSE**
145 PARK PLACE
POINT RICHMOND

PABLO FANQUES FAIR
237-0868
Fine handcrafts
original graphics
custom framing

Old Firehouse
ICE CREAM PARLOR 235-2468
BAKE SHOP
CONFECTIONERY

The Pumpkin Eater
CHILDREN'S BOUTIQUE
237-4073

KENDALL ENGLISH
Architects
Planners 233-0867



CHILDREN'S BOUTIQUE

TOYS · CLOTHES · CHILDREN'S ACCESSORIES

Old Firehouse



ICE CREAM PARLOR
BAKE SHOP-CONFECTIONERY

145 PARK PLACE
POINT RICHMOND
235-2468

★ **McCallum's Famous**
ICE CREAM,

★ **A New line of fine**
BAKERY ITEMS,

★ & SANDWICHES, COFFEE & CONFECTIONS

OPEN: Mon.-Thurs. 10:00~9:00
Fri.-Sat. 10:00~11:00
Sun. 11:00~9:00

which is not part of the school curriculum, is a matter for official concern.

Our organization finds it hard to believe that the letter written by Dr. Snodgrass to Mr. Smith represents the Board's position, but the ambiguities of your letter to me lead us to again request a place on the agenda of the School Board meeting of June 17th so that this matter may be clarified.

Obviously, if Dr. Snodgrass was not presenting Board position, but was enunciating his private opinion as a simple citizen, the confusion that presently exists can be easily corrected by a letter to that effect from Dr. Snodgrass to Mr. Smith.

Hoping that the rather serious implications of this matter can be resolved,

Sincerely,
Lucretia Edwards



Dear Neighbors,

A number of Point Richmond people, anxious to inform themselves in depth about the implications of the strife in South East Asia, have been meeting Sunday evenings at 8 p.m. at the Point Richmond Community Center. Because we honor and want to discuss all points of view, and because we believe that there are points of view in our neighborhood which have not had representation at our meetings, we urge all of you to join us. The following topics and speakers have been set up, and we will schedule others according to interest.

Sunday, June 7:

"Why is America Involved in South East Asia?" Tony Magennis - Young Republicans, Shannon Brown - Committee of Concerned Asian Scholars.

June 14:

Point Richmond veterans of Vietnam relate their Experiences.

June 21:

"The Wat and the American Economy" (Speakers to be announced.)

Karen Fenton.

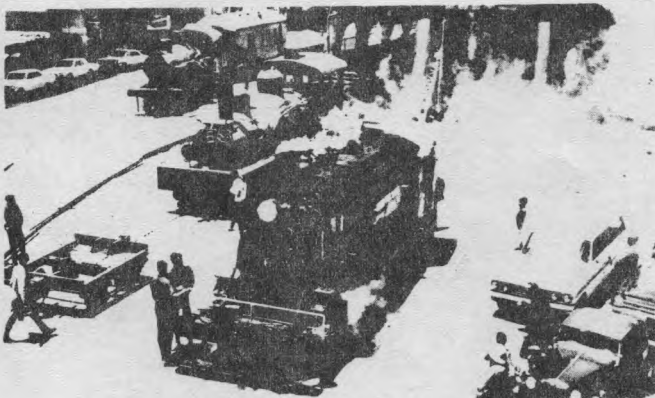


CONTINUED FROM PAGE 1

There have been other excursions and field trips. Not all of them were designated to make money, but any profits derived are used to further the growing Cas-trop Point Railway museum.

Through an active museum program, the Pacific Locomotive Association has acquired the largest operable club-owned collection of steam locomotives in California. Using proceeds gained through donations and excursions, a fine operable museum has become a reality. At one time -- perhaps several times -- at Civic group planning sessions or informal discussions about things that would be nice to have at Point Richmond the idea of a Railroad Museum was brought up; now there is one, and perhaps Point Richmond people would be interested enough to become contributing sponsors or even members.

The Pacific Locomotive Association needs financial support in order to further its goals. For those who wish to be kept informed about activities of the Association, and join in support of the Railroad museum and other projects, you may send a donation of as little as \$3.00 per year to become a Contributing Sponsor. Checks may be sent to Donald A. Hansen, 3904, Nineteenth Street, San Francisco, 94114.



16.

SANTA FE

Market

155 W. Richmond
234-2409

Finest meats • produce • liquor

select liquors

THE SPOT

**BAR &
LIQUOR
STORE**

1 STANDARD AVE • 232-6789

Central pool hall

BEER & SOFT DRINKS
49 WASHINGTON AVE.

Fresh PRODUCE • MEAT • BEER • WINE

RON'S MARKET

233-9044 • 160 WASHINGTON

Small

JOB PRINTING

"instant-print" service
233-4999 now & then

DR. ENTERPRISES

BURGLAR  FIRE
 ALARM SYSTEMS FOR HOME & BUSINESS
 BEST QUALITY+++++LOWEST PRICES
 GUS HARTWIG • 452-2552

BUYING OR SELLING?

Jack STODDARD
realty

119 PARK PLACE
 POINT RICHMOND
 234-8218

BETTY PEARSON
 MAXINE STODDARD
 KIM STODDARD
 POINT RICHMOND
 SPECIALISTS ❁❁

Bradley's
AUTOMOTIVE SERVICE

OPEN 7 TO 7
 WEEKDAYS...
 9 TO 5 SAT. • complete auto repairs •
 101 W. RICHMOND 233-1527

Hitachi

The ultimate vacuum cleaner. Features dust indicator and remover, supersuction motor, and self-winding cord switch. Comes with crevice clothes and upholstery nozzle. All metal construction. Quiet, vibration-free motor. 2-way rug/floor nozzle whisks through cleaning chores. Available in Blue or Pink.



FRIENDLY T.V.

PHONE
 233-4158
 109 W. RICHMOND AVE.
 RICHMOND, CALIF.

HEALTH

Comes first

by A. H. MEADS

Part 2.

What can we do to prevent foot trouble? As you might expect, we should concentrate our preventive efforts in childhood and much of the literature dealing with foot health concerns training and proper shoeing of children. We must be aware of the fact that foot disorders are very often not apparent for years and a child's foot may become deformed so gradually that he experiences no pain and his parents may not suspect that anything is wrong. Posture is of utmost importance.

One's feet should at all times be straight - that is, parallel to one another; rather than turned out or turned in. Pigeon-toes suggest immediately that something is wrong and the pigeon-toes child will usually be taken to the doctor. But until quite recently it was considered genteel to turn the toes out in walking and many of us suffer today as a result of this fad. When the toes turn out in walking or standing, the weight of the body is thrown on the inner arch which sooner or later is bound to give away. So the first and most important exercise for healthy feet is learning to walk and stand with feet parallel. When we take a step the weight should be first on the heel, then as we go forward, it is transferred to the outer arch and finally to the great toe.

It is impossible to walk correctly in High Heels. Regardless of whether you

are holding your feet correctly parallel, they must slip forward in your shoes due to the height of the heel. And many of the foot troubles of modern women are concentrated in the forepart of the foot which is, of course, the part which is twisted and deformed by high heels.

CHILDREN OUTGROW SHOES RAPIDLY

An active youngster takes 30,000 steps in one day. If his shoes do not fit properly, is it any wonder that his feet soon suffer from all kinds of ailments? Children's shoes should be replaced as soon as there is any indication they are too small. The fitting should be carefully made, with the child standing, so that the full weight is on the feet. There should be the width of an adult's thumb between the toes and the end of the shoe. And since you never know how fast your child may be growing during any given time, you should make frequent examinations between shopping trips, just to make sure that Junior's feet still have room inside his shoes. In general, it appears that shoes should be firm enough to give support, yet should not be made of stiff unyielding leather which might be appealing because of its durability. Nor should sneakers be worn a great deal of the time. If your child finds that sneakers are comfortable during the summer, make sure that he wears leather shoes part of the time, for sneakers or tennis shoes do not give enough support for constant wear.

PART 3 Next Week: Corns and Calluses, and the Rules for Foot Health.



SOAP MAKING

For the young housewife who likes to be a bit old fashioned and out-of-doors:

In a huge kettle, the type which stood on three legs, mama would put in the following ingredients:

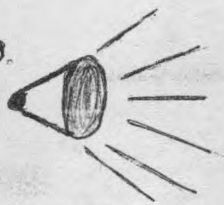
- 7 lbs. of grease (saved from meats)
- 3 pound pail of hot water
- 2 cans lye

Stir until dissolved then add to 10 pound pail of hot water. Cook over open fire and test in shallow pan, then add:

- 3 pound pail of hot water
- Cool slightly, then add:
- 1 cup gas
- 4 Tbs. Borax powder

Let stand over night, then cut into bars and dry. When the soap is cold and hard cut pieces of size you can use, and lay all out on a table to dry more thoroughly.

The brown-greenish jelly left in the kettle should be used with a stiff brush to scrub floors. Mix one cup of settlings with a pan of hot water, then get down on your hands and knees to scrub. The remainder can be used to boil clothes, and of course the bar soap is used to rub the dirty spots as you rub your laundry on a scrub board.



pageing the

Younger Generation

Things We Learn to do



and



to drink from
a cup without
spilling

to pour
water from
a pitcher
to a glass



and



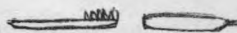
to tie our shoes

button our
shirts

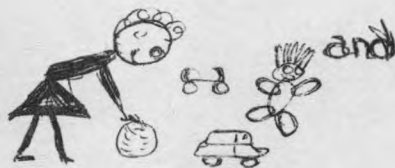


Wash our faces

and



brush our
teeth



Pick up our
toys



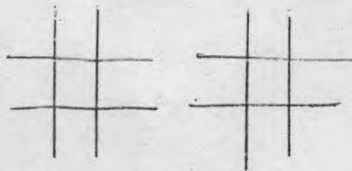
Hang up our
clothes

Then we learn to

Print our name _____

Draw pictures

Play Games *



TIC-TAC-TOE



BOXES

Write a story

Mom: Please submit story to bbScenic
Ar.

*See next page for instructions

Let's Play



What you need:

String - - - 20 inches long

Paper, pencil, crayolas

First:

Trace clown onto heavy paper and cut out.

Draw a face on both sides and color.

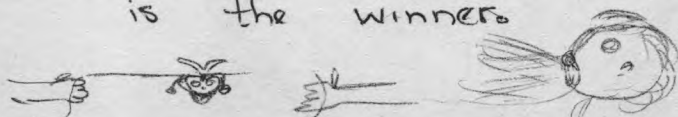
Poke a small hole in the center for the string. (H)

How to Play:

Each player holds one end of the string with the clown in the middle.

Both players try to blow the clown away.

The one who blows him far enough to touch the other player's hand is the winner.



How to play: Tic-Tac-Toe

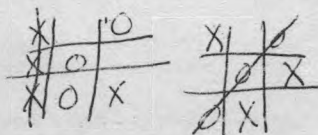
2 players

First player uses an X

Second player uses an O

Take turns marking in the square.

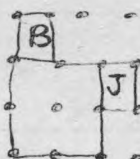
The first player to have a straight row of his marks wins!



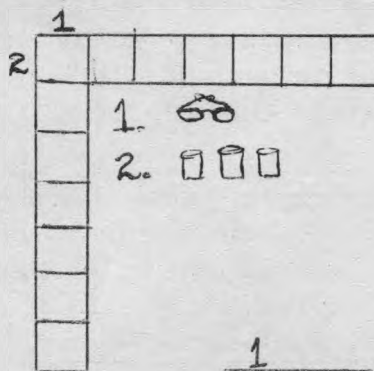
BOXES

2 players

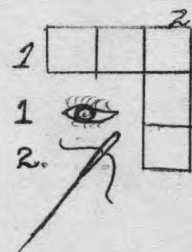
Take turns drawing lines from one dot to another. All lines must be touching. When a player completes a box, he puts his initial in that box. The player who finishes the most boxes wins!



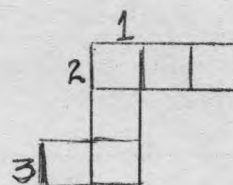
PICTURE PUZZLE Shorties



1.
 2.



1.
 2.



1. $1+1 = \underline{\quad}$

2. and

3. I am going
— the store

FREE

KITTENS: Only two left. One black, and one tabby. Please give these kittens a home. Call 237-3453.

FOUND

WHITE FLUFFY CAT IN Female, young, Y: long tail and green eyes. Call 234-ast 333 or call at 833 Ocean Avenue in LADIE'S EYE GLASSES--by triangle on n-May 21, 197-. Ask at Pool Hall.

WANTED

CONSIGNMENT CLOTHING

Call Point International 11:30 to *8:00. Closed Mondays.

Old NEWSPAPERS: Call 234-0481 for pickup.

BY HUSCICON: Electric staplers, Addressing equipment, polaroid camera. Donations are tax deductible. 235-6347.

RELIABLE TEENAGER: to drive to and from Berkeley daily, June 22 through July 10, and sit with six year old girl. 235-2224.

STUDIO APARTMENT-Writer wants wither furnished or unfurnished apartment. References. 799-4677

FOR RENT

ON HILL: 2 room apartment. with stove and refrigerator. Water and Garbage paid. Partially furnished or unfurnished. Single working man or woman. References. Available around June 15. Call 232-2660.

IN POINT RICHMOND: Upper flat. Beautiful. Spotlessly clean. 2 bedrooms. Unfurnished, carport and fireplace. Washer dryer included. Adults. No pets. \$150 month. Call at 64 Railroad Avenue.

STORE: In Point Richmond--for a nice hamburger shop. etc. Call at 64 Railroad Ave..

3 BEDROOM furnished house. Village side of hill. Lease. 232-6244.

MODERN SPACIOUS; open plan, one bedroom unfurnished apartment in modern Triplex in Point Richmond. (204 Castro) \$125/mo. 50-50 deposit. (\$50 refundable) Located within easy walking distance to bus, stores, library, indoor swimming pool and elementary school. Features large rooms, ample closet space, carpets, drapes. No pets, one child o.k. Call owner at 368-8431 any time. Available early June.

FOR SALE

MOTOR SCOOTER-Lambretta. Best offer. New tires, brakes, engine rebuilt. Call 233-4999.

CAR FOR SALE: 61 Pontiac convertible, Bonneville. Rebuilt transmission, new shocks, new battery. Runs well. \$200 or best offer. 519 Tewksbury Sundays or Mondays or after 6 P.M.

CAR: 64 Pontiac Le Mans convertible. Factory Air conditioning. Clean and very nice. \$575. 519 Tewksbury on Sundays or Mondays or after 6 P.M.

MOTORBOAT-15' boat and trailer. \$75 Fifteen-foot fishing boat. \$25. Both boats and trailer are registered. Leight Wright, 222 Tunnel Ave.

DOG: Beagle-Bird Dog, four months old. \$25.00. Female. Call at 64 Railroad Avenue.

WEIMERARNER PUPPIES AKC. Show quality. Hunting dogs. Silvers, blues. 233-9135.

HEAVY DUTY Box Trailer. 4' wide, 2' high, 10' long. Weather tight top. (locks). New tires and spare. Six compartments inside. Ideal for camping or tools. 233-4999.

BED FRAMES: Pair, twin bed frames, beautiful mahogany. \$20 ea. or 2/\$37.50. 233-4999.

ANTIQUE Oak Breakfront. 233-4999.

SERVICES

COMMISSION John Werner to do your custom stoneware pottery or sculpture. Finest craftsmanship. Prompt delivery. Reasonable prices. 237-3453

LANDSCAPING, light hauling, what have you. Arnie. Message phone 232-5744

CANDID SHOTS of you your kids, your dog, whatever. Photos mounted. Reasonable rates. Also will print your negatives to your specifications. Carolyn. 237-1749.

YOUR PORTRAIT in oil. Two - three sittings. Call Grethe Tedrick. 234-0415, for an appointment.

WILL CLEAN your basement, garage or home. Very reasonable. 234-6037

ODD JOBS DONE: Garage cleaning: David Armstrong. Message phone: 232-5744

CLOTHES ALTERATIONS Reasonable rates. Professional seamstress. Emelia Fornalski. 235-8894

IRONING & MENDING in my home. Mrs. Beardsley: 234-0178

BABYSITTING in my home. Weekends. Three yrs. and up. 232-3429, Helen Mailo.

TEENS FOR HIRE

BABYSITTING:

Sherry & Loretta Mertle: 232-0995
Wendy Wirth: 233-5618
Lisa Williams: 233-5211
Linda Taylor: 232-8819
Mike Allaire: 234-3856
May Sinawi: 233-5742
Jennifer Allaire: 234-3856
Craig Healy: 234-6139

BABYSITTING & HOUSEWORK:

Sherry Enyeart: 235-4972
Debra Dustin: 232-6612
Ellen Rasmussen: 233-1112
Lisa Walker: 237-1260

PET SITTING:

Isabel Austria: 232-3429

ODD JOBS:

Geoffrey Williams: 233-5211
Marion Tedrick: 234-0415
Lisa Williams: 233-5211

22.

CIVIC CALENDAR

JUNE 5 - 6 Friday & Saturday

8:00, Oakland Auditorium Theater
"Dido & Aeneas" and "Old Maid and the Thief"

JUNE 6: "Play of Daniel" 8:15,
First Unitarian Church, Kensington.

JUNE 5: Friday

Girl Scout Court of Awards, 7 p.m.
Washington School Auditorium

JUNE 8 : Monday

Richmond Art Center summer class
registration for adults.

JUNE 8 : Monday

7:30 p.m. Room 400 Ells High School,
PTA meeting, election of officers.

JUNE 10: Wednesday

Richmond Art Center Registration
for teens and children.

JUNE 10 : 10 a.m.

Bay Area Air Pollution Control Board
Meeting in Richmond. City Council
Chambers, City Hall.
OPEN TO PUBLIC

JUNE 13 - "Farm Fair"

at Tilden Little Farm, 1 to 5 p.m.

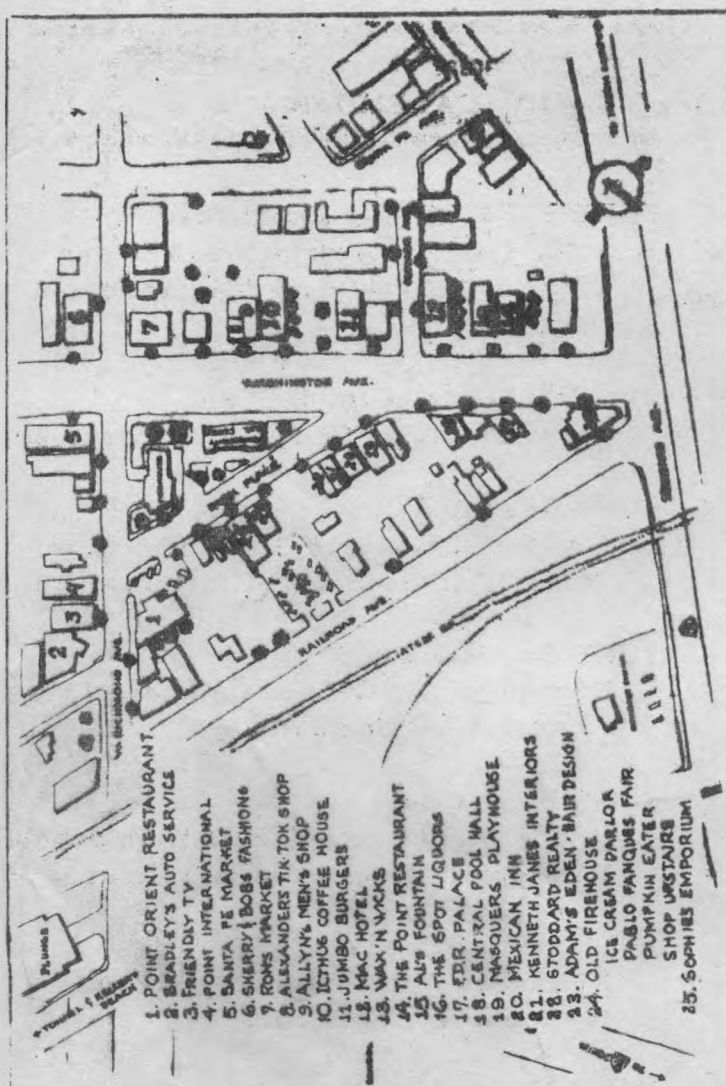
JUNE 16, 17, 18 - Registration for

Summer classes at Richmond Plunge.

JUNE 12 - SCHOOL'S OUT !

JUNE 13 -ANNUAL SCOUT BREAKFAST-
methodist church

Wanted: Paper Carriers for Point Counterpoint. Either as substitutes or regular. Call 233-4999.



POINT COUNTERPOINT

CIRCULATION MANAGER: LOUISE GENOSICK
RONI ROSELIUS, ASS'T.

PAPER CARRIERS

ISABEL AUSTRIA: 232-3429, ERIN EVANS: 235-7177
MICHAEL FERGUSON: 237-0413, MICHELLE HEALY: 235-3897
DIANNA LORETZ: 234-7530, JODI ROSELIUS: 235-4222
JAMIL SINAW: 233-5742, ALIAN SMITH: 234-5149,
DAVID WHITE: 234-0178, PEGGY WILSON: 234-0814.

SUBSCRIPTION FORM:

MAIL TO DR³ ENTERPRISES, 212 BISHOP AVE., POINT RICHMOND, CA. 94801.

POINT RICHMOND RESIDENTS (via Paper Carriers):
SIX MONTHS: \$2.30, ONE YEAR: \$4.50.

NON-RESIDENTS (via mail):
SIX MONTHS: \$3.25, ONE YEAR: \$6.50.

PLEASE CIRCLE LENGTH OF SUBSCRIPTION DESIRED AND FILL IN BELOW

NAME _____

ADDRESS _____

street

city

state

zip code

make checks payable to DR³ Enterprises

FIRST UNITED METHODIST CHURCH OF RICHMOND

WEST RICHMOND & MARTINA

SUNDAY CHURCH SCHOOL 9:45 A.M.

PUBLIC WORSHIP 11:00 A.M.

M.Y.F. YOUTH GROUP 6:30 P.M.



Our Lady of Mercy Church

305 W. Richmond



SUNDAY MASS

8 AM
10 AM

WEEKDAY MASS

7:30 AM

POINT RICHMOND BAPTIST CHURCH

304 WASHINGTON AVE.



CHURCH SCHOOL 9:45
MORNING WORSHIP 11:00 AM

BYF YOUTH GROUP 6 PM

EVENING SERVICE 7 PM

MID-WEEK SERVICE WED 7 PM

Point Counterpoint is published each Friday in Point Richmond, Calif., by DR³ Enterprises, 212 Bishop Ave. Tel. 233-4999 or 235-4222.

News articles, poems, art work, stories, etc., welcomed. Call 233-4999, 235-4222, 237-3453, 234-5334, or 237-4772; or drop articles in mailbox at 212 Bishop (not used for U.S. mail).

EDITOR: DONNA ROSELIUS
ASSISTANT EDITOR: LINDA WERNER (237-5422)
LOCAL NEWS EDITOR: DOROTHY KING (237-4772), MILDRED NANN (234-5334).

ARTICLES PRINTED IN THIS JOURNAL DO NOT NECESSARILY REFLECT VIEWS OF PUBLISHER OR EDITOR AND ENDORSEMENT IS NOT IMPLIED.

Public agencies concerned with environmental safety:

Bay Area Air Pollution Control Bd. 771-6000
Water Quality Control Bd. 464-1225
Public Health. 234-7900
Sonic Boom (Hamilton AF Base), . 838-3711